

## Standard Preparation 2200 mm Work Table with upstand and underframe

ITEM # \_\_\_\_\_

MODEL # \_\_\_\_\_

NAME # \_\_\_\_\_

SIS # \_\_\_\_\_

AIA # \_\_\_\_\_


**133237 (TG2200UN)**

 Work Table with 100mm  
upstand and underframe,  
2200 mm

### Short Form Specification

**Item No.** \_\_\_\_\_

The 50mm high worktop in 304 AISI stainless steel, 1mm in thickness, has upturned edges and incorporates a layer of sound deadening, waterproof and fireproof material. Integral radiused rear upstand, h=100mm. Square section legs 40x40mm on 1" height-adjustable feet in 304 AISI stainless steel.

### Construction

- 100 mm upstand with 8 mm radiused corner and 13 mm deep, designed to be used against a wall.
- 50 mm worktop in 304 AISI stainless steel, 10/10 in thickness with upturned edges and reinforced waterproof underpanel, incorporates a layer of sound deadening materials.
- Square section legs and 40 mm height-adjustable feet in 304 AISI stainless steel.
- Table top slots into legs without using screws to facilitate installation.
- 400 or 600 mm wide single drawer, chest of 4 drawers, lower shelf, three-sided underframe and set of castors as alternative to the feet, can be fitted as optional on all work tables.
- 40 mm-thick lower shelf (available as optional accessory on some models) slots easily into place at a height of 200 mm from the floor. Lower shelf is compulsory to install the chest of drawers.
- Provided with three-sided underframe as standard accessory.

### Optional Accessories

- Set of 4 wheels (2 with brake) PNC 855150 ☐  
d. 100mm for tables and sinks  
(total height on wheels= 993 mm)
- Single drawer GN 1/1, 400mm PNC 855280 ☐
- Single drawer, 600mm PNC 855281 ☐
- Additional drawer, 600mm (to PNC 855295 ☐  
set up a chest of 2, 3, 4  
drawers)
- Additional drawer GN 1/1, PNC 855298 ☐  
400mm (to set up a chest of 2,  
3, 4 drawers)
- Lower shelf for 2200 mm PNC 855364 ☐  
tables and sinks

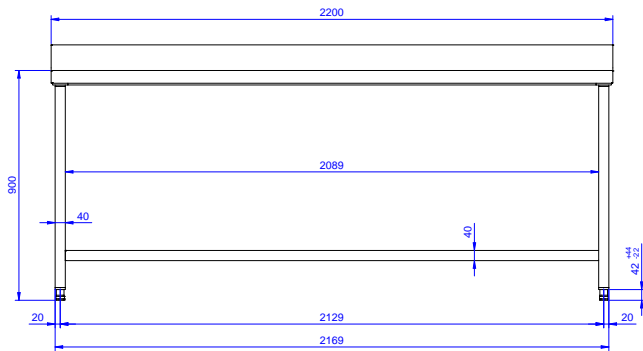
**APPROVAL:** \_\_\_\_\_



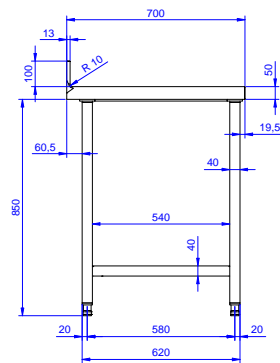
**Electrolux**  
PROFESSIONAL

## Standard Preparation 2200 mm Work Table with upstand and underframe

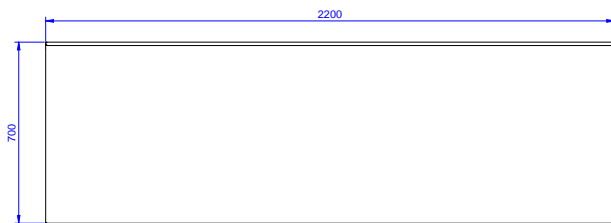
Front



Side



Top



### Key Information:

External dimensions, Width:	2200 mm
133237 (TG2200UN)	
External dimensions, Depth:	700 mm
External dimensions, Height:	1000 mm
Upstand Dimensions, Height:	100 mm
Upstand Dimensions, Depth:	13 mm
Upstand Dimensions, Radius:	R=8
Worktop thickness:	50 mm
Net weight:	77 kg

Standard Preparation  
2200 mm Work Table with upstand and underframe

The company reserves the right to make modifications to the products without prior notice. All information correct at time of printing.

2025.10.15